



## Molecular and functional characterization of adipokinetic hormone receptor and its peptide ligands in *Bombyx mori*

Chenggang Zhu<sup>a,1</sup>, Haishan Huang<sup>a,1</sup>, Rongsheng Hua<sup>b</sup>, Guo Li<sup>a</sup>, Dong Yang<sup>a</sup>, Jiansong Luo<sup>c</sup>, Cunxin Zhang<sup>a</sup>, Liangen Shi<sup>b</sup>, Jeffrey L. Benovic<sup>c</sup>, Naiming Zhou<sup>a,\*</sup>

<sup>a</sup>Institute of Biochemistry, College of Life Sciences, Zijingang Campus, Zhejiang University, Hangzhou, Zhejiang 310058, China

<sup>b</sup>College of Animal Sciences, Huajia Pond Campus, Zhejiang University, Hangzhou, Zhejiang 310029, China

<sup>c</sup>Department of Biochemistry, Kimmel Cancer Center, Thomas Jefferson University, Philadelphia, PA 19107, USA

### ARTICLE INFO

#### Article history:

Received 20 February 2009

Revised 25 March 2009

Accepted 26 March 2009

Available online 2 April 2009

Edited by Jesus Avila

#### Keywords:

Adipokinetic hormone

Signal transduction

Receptor

G protein

Internalization

Mitogen-activated protein kinase

*Bombyx mori*

### ABSTRACT

Neuropeptides of the adipokinetic hormone (AKH) family are among the best studied hormone peptides, but its signaling pathways remain to be elucidated. In this study, we molecularly characterized the signaling of *Bombyx* AKH receptor (AKHR) and its peptide ligands in HEK293 cells. In HEK293 cells stably expressing AKHR, AKH1 stimulation not only led to a ligand concentration dependent mobilization of intracellular  $\text{Ca}^{2+}$  and cAMP accumulation, but also elicited transient activation of extracellular signal-regulated kinase 1/2 (ERK1/2) pathway. We observed that AKH receptor was rapidly internalized after AKH1 stimulation. We further demonstrated that AKH2 exhibited high activities in cAMP accumulation and ERK1/2 activation on AKHR comparable to AKH1, whereas AKH3 was much less effective.

© 2009 Federation of European Biochemical Societies. Published by Elsevier B.V. All rights reserved.

### 1. Introduction

Adipokinetic hormones (AKHs) produced by the insect corpora cardiaca are among the most extensively characterized peptide hormones with almost 40 family members from most of the major insect orders [1–7]. AKH is normally 8–10 amino acids long with a pyroglutamate at the N-terminus and an amidated C-terminus. In addition to the essential role of mobilization of metabolites during energy-expensive activities such as flight and locomotion, AKH is involved in the control of carbohydrate homeostasis in the haemolymph of *Drosophila* and *Bombyx* larvae [8,9]. As shown in Table 1, in *Bombyx*, a non-peptide identical with *Manduca* AKH (AKH1) has been chemically identified [10], and recently another two cDNAs encoding the prepro-*Bombyx* AKH2, and 3 have been annotated

and identified by combining homology search with cDNA cloning [11].

The receptor of AKH was first identified as a typical G protein-coupled receptor (GPCR) from the fruitfly *Drosophila melanogaster* and the silkworm *Bombyx mori* in 2002 [12], and then from the cockroach *Periplaneta americana* [13] and African malaria mosquito *Anopheles gambiae* [14]. Previous biochemical characterization with isolated fat body suggested that AKH binds to its receptor and activates adenylyl cyclase via the Gs protein, which results in an increase of intracellular cAMP levels. In addition, AKH activates phospholipase C (PLC) to induce the release of  $\text{Ca}^{2+}$  from intracellular  $\text{Ca}^{2+}$  stores [15–17]. However, the mechanistic details of AKHR signaling remain to be further elucidated.

In this present study, we cloned the AKHR from the fat body of the silkworm *B. mori* and further functionally characterized it and its peptide ligands in HEK293 cells. We conclude that after activation of AKHR, in addition to cAMP accumulation and  $\text{Ca}^{2+}$  release from  $\text{Ca}^{2+}$  stores, the mitogen-activated protein kinase (MAPK) pathway is subsequently activated and AKHRs are rapidly internalized from the plasma membrane upon agonist stimulation. AKH1 and AKH2 activated AKHR with similar affinity, but AKH3 exhibits almost much less activity on AKHR. These findings provide a

**Abbreviations:** GPCR, G protein-coupled receptor; AKH, adipokinetic hormone; Hez-HrTH, *Heliothis zea* hypertrehalosaemic hormone; MAPK, mitogen-activated protein kinase; ERK1/2, extracellular signal-regulated kinase1/2; PTX, pertussis toxin; CTX, cholera toxin

\* Corresponding author. Fax: +86 0571 88206134x8000.

E-mail address: [znm2000@yahoo.com](mailto:znm2000@yahoo.com) (N. Zhou).

<sup>1</sup> Both authors contributed equally to this work.

foundation for future studies of the physiological role of AKH/AKHR signaling in the diapauses, development and reproduction of *Bombyx*.

## **2. Materials and methods**

### *2.1. Materials*

Larvae and pupae of the silkworm strain Feng-Yi were kindly provided by Dr. Kerong He (Zhejiang Agricultural Institute). Cell culture media and G418 were purchased from Invitrogen (Carlsbad, CA). The pEGFP-N1 and pCMV-Flag vectors were purchased from Clontech Laboratories Inc. (Palo Alto, CA) and Sigma (St. Louis, MO), respectively. The membrane probe DiI and nuclear dye Hoechst33258 were purchased from Beyotime (Haimen, China). Pertussis toxin (PTX) and cholera toxin (CTX) were purchased from Sigma and Calbiochem (Cambridge, MA), respectively. Primary antibodies for Western blotting were purchased from Cell Signaling (Danvers, MA) and Beyotime.

### *2.2. Cell culture and transfection*

The human embryonic kidney cell line (HEK293) was maintained in Dulbecco's Modified Eagles Medium (DMEM, Invitrogen) supplemented with 10% heat-inactivated fetal bovine serum (Hyclone) and 2 mM L-glutamine (Invitrogen). The AKHR cDNA plasmid constructs were transfected or co-transfected into HEK293 cells using Lipofectamine 2000 (Invitrogen) according to the manufacturer's instructions. Forty-eight hours after transfection, selection for stable expression was initiated by the addition of G418 (800 µg/ml). Transfected cells were evaluated for expression of AKHR at the cell surface by flow cytometry.

### *2.3. Cloning of Bombyx AKHR cDNA and construction of mammalian expression vectors*

Total RNA was isolated from the fat body of pupae of *B. mori* using the TRIzol reagent (Keygen, Nanjing, China) following the manufacturer's instructions. The cDNA was prepared with an AMV First Strand cDNA Synthesis Kit (Sangon, Shanghai, China) according to the manufacturer's instructions. To amplify the full-

paraformaldehyde in PBS and subjected to flow cytometry analysis on a FACScan flow cytometer (Coulter EPICS Elite, Coolten Corp., Hialeah, FL).

### 2.9. Peptide synthesis

The AKH peptides (Table 1) were prepared by solid-phase synthesis using the Fmoc strategy on a 430A peptide synthesizer (Applied Biosystems, Foster City, CA) and a 9050 Pepsynthesizer Plus (Perceptive Biosystems, Cambridge, MA) and purified by preparative reverse-phase high-performance liquid chromatography using a Dynamax-300 Å C18 25 cm × 21.4 mm ID column with a flow rate of 9 ml/min and two solvent systems of 0.1% TFA/H<sub>2</sub>O and 0.1% TFA/acetonitrile.

## 3. Results

### 3.1. Expression and cellular localization of AKHR

We cloned the adipokinetic hormone receptor (AKHR) cDNA from the fat body of pupae of the silkworm *B. mori* by RT-PCR,

and constructed two vectors to express AKHR with either a Flag-tag at the N-terminus or enhanced green fluorescent protein (EGFP) at the C-terminus. After transfection of HEK293 cells with Flag-AKHR and AKHR-EGFP, stably expressing cells were selected by the addition of 800 µg/ml G418, and confirmed by FACS analysis and fluorescent microscopy (Fig. 1A and B). As shown in Fig. 1A, significant cell surface expression was detected by fluorescent microscopy with minimal intracellular accumulation in the absence of AKH1.

### 3.2. cAMP accumulation and intracellular calcium mobilization in AKHR expressing cells stimulated by AKH peptides

cAMP accumulation depends upon the coupling of AKHR to G proteins. To evaluate the role of AKHR in stimulating cAMP production, a stable cell line co-transfected with Flag-AKHR and pCRE-Luc was established. Upon stimulation with different concentrations of AKH1 peptides, the cAMP inside of the cells accumulated in a dose-dependent manner with an EC<sub>50</sub> of 6.4 nM. As a control, no change in the cAMP level was detected in parental HEK293 cells (Fig. 2A and C). Pre-treatment with 100 ng/ml PTX was found to have no effect on cAMP generation in Flag-AKHR-expressing cells stimulated by AKH1, whereas stimulation with CTX led to a remarkable increase in the cellular levels of cAMP (Fig. 2B), suggesting that coupling of the Gs protein was involved in the AKHR signaling pathway in 293 cells.

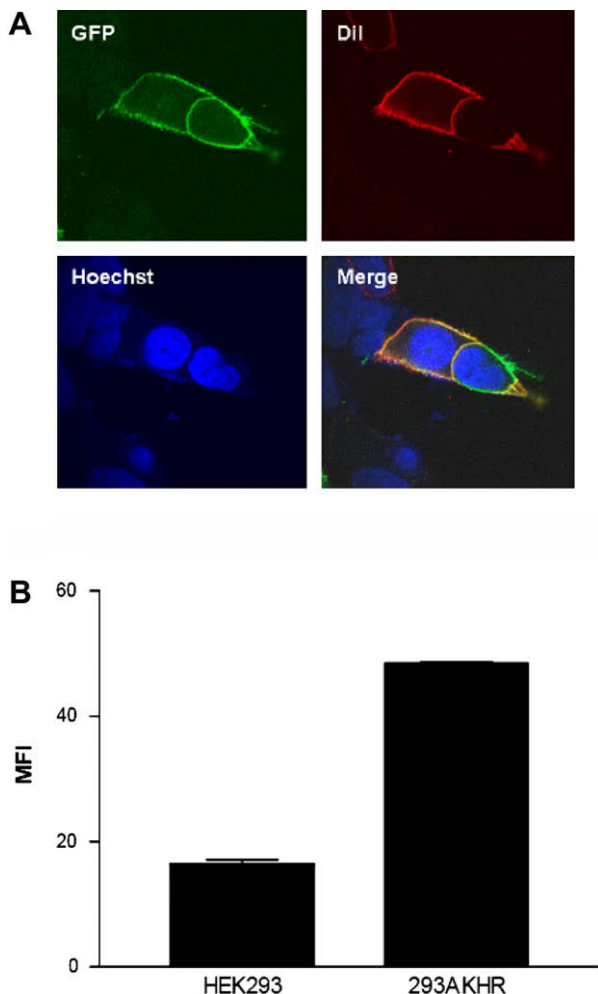
*Bombyx* AKHR was further evaluated by an assay that is dependent upon ligand activation of the phospholipase C signaling pathway resulting in mobilization of intracellular Ca<sup>2+</sup> from the ER pool to the cytoplasm. We then examined the effects of AKH1 peptides on the intracellular Ca<sup>2+</sup> change in the AKHR-expressing cells using the calcium probe fura-2. As indicated in Fig. 2D, AKH1 peptides did not affect the Ca<sup>2+</sup> fluxes in the parental HEK293 cells, but, in parallel, elicited a rapid increase of Ca<sup>2+</sup> in the Flag-AKHR-expressing cells in a dose-dependent manner, as demonstrated by previous reports [15,19].

### 3.3. AKH1 mediates activation of MAPK pathway in AKHR-expressing cells

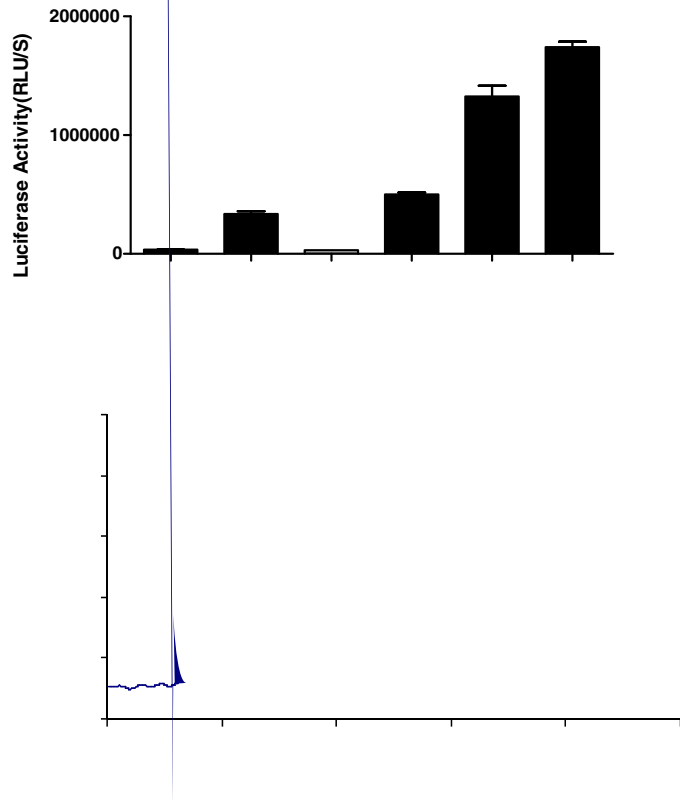
To investigate whether the activation of AKHR in stably transfected cells stimulates the phosphorylation of ERK1/2, the cells seeded in six-well plates were treated with AKH1 peptides, and assessed using a phospho-specific antibody known to bind only to the phosphorylated and activated forms of these kinases [20]. Fig. 3 shows that activation of AKHR elicited transient phosphorylation kinetics of ERK1/2 with maximal phosphorylation evident at 2–5 min and a return to almost basal levels by 15 min. By contrast, treatment with AKH1 did not provoke any appreciable effects on ERK1/2 in the parental 293 cells or transiently mock-transfected 293 cells. Fig. 3C illustrates the concentration dependence of AKH-mediated ERK1/2 phosphorylation and activation, with ERK1 and -2 phosphorylation increased significantly by nanomolar concentrations of AKH1 and a maximal ERK1/2 phosphorylation of at least three times the basal level.

### 3.4. Rapid internalization of AKH receptors upon activation by AKH1

In order to visualize the internalization and trafficking of AKHR, we constructed a vector to express a chimeric protein in which enhanced green fluorescent protein (EGFP) is fused to the C-terminal end of AKHR (AKHR-EGFP) and established a stable HEK293 cell line expressing AKHR-EGFP. Observation of stable AKHR-EGFP-expressing HEK293 cells with fluorescence microscopy revealed that the fluorescence of AKHR-EGFP was mainly localized in the plasma membrane, and to a lesser extent in intracellular vesicles.



**Fig. 1.** Expression of AKHR in stably transfected HEK293 cells. (A) HEK293 cells stably expressing AKHR-EGFP (GFP) were stained with a membrane plasma probe (DiI) and a nuclei probe (Hoechst 33258). (B) The cell surface expression of the stably transfected HEK293 cells was analyzed by FACS. Stable 293 cells were analyzed for cell surface expression of Flag-AKHR by flow cytometry using the anti-Flag mAb M2. Bars represent the mean fluorescence intensity for cells expressing Flag-AKHR. All data are shown as means ± S.E. from at least three independent experiments.



Upon activation of AKHR-EGFP with ligand, the receptor was rapidly and dramatically redistributed in the cytoplasm with distinct perinuclear accumulation. The internalization of AKHR-EGFP was detectable 5 min after AKH1 stimulation, and reached a maximum within 30 min (Fig. 4).

### 3.5. Functional comparison of newly cloned AKH2 and AKH3 peptides with AKH1

In *Bombyx*, recently another two distinct cDNAs encoding the prepro-AKH2, and 3 have been cloned [11], but never be characterized. We synthesized *Bombyx* AKH2 and AKH3 peptides (Table 1) and determine their functional activities on AKHR. As shown in Fig. 5, although AKH2 exhibited high activity in inducing cAMP accumulation ( $EC_{50} = 11.7 \pm 1.6$  nM) (Fig. 5A) comparable to AKH1 ( $EC_{50} = 6.4 \pm 1.9$  nM), showed lower activities in ERK1/2 phosphorylation (Fig. 5B) and receptor internalization (Fig. 5C) than that of AKH1. AKH3 did also activated AKHR in cAMP accumulation ( $EC_{50} = 1.07 \pm 0.33$   $\mu$ M) with a much lower potency than that of AKH1 and AKH2 (Fig. 5A), but showed no activities on AKHR in ERK1/2 phosphorylation and receptor internalization (Fig. 5B and C).

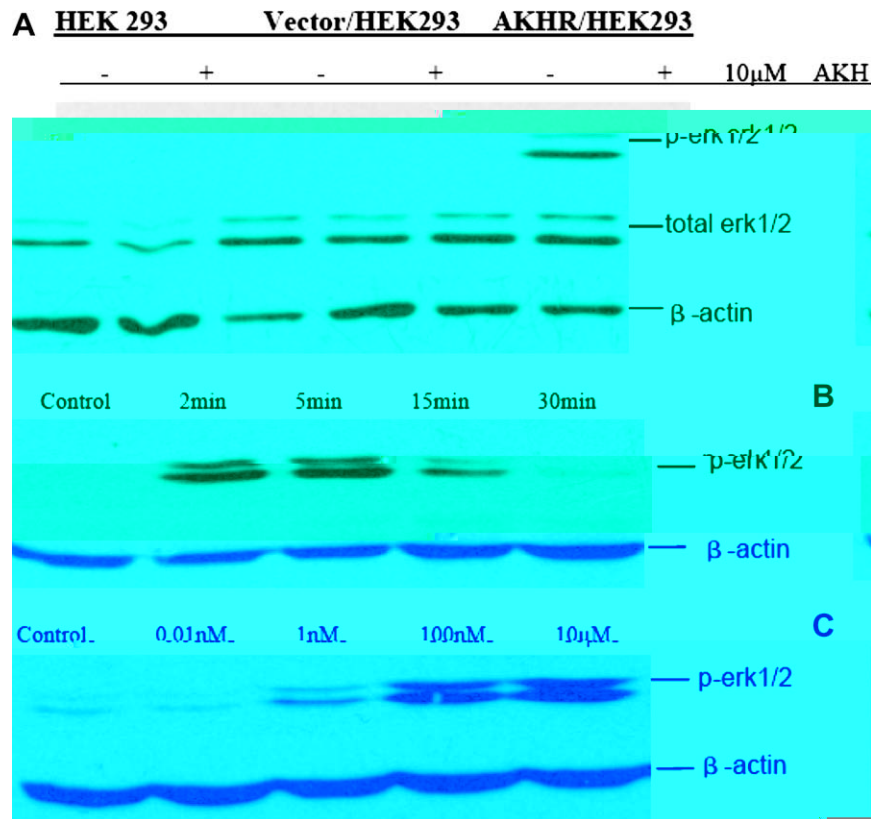
## 4. Discussion

The signaling of AKH peptides has been studied in a few insects, but only in selected pathways such as cAMP and  $Ca^{2+}$  [19]. To date, most of our knowledge on signal transduction of the AKH peptide is derived from biological assays and use of purified fat cell mem-

branes [21,22]. In this study, we molecularly and functionally characterized the signaling pathway of *Bombyx* AKHR, and demonstrated that activation of *Bombyx* AKHR not only led to cAMP accumulation and transient intracellular  $Ca^{2+}$  influxes in stable HEK293 cells, consistent with previous reports using biological assays and purified fat cell membranes, but also elicited transient activation of ERK1/2 pathway.

ERK1/2 has emerged as important effectors for GPCRs, and can be used to measure the functional outcome of receptor stimulation [23,24]. Therefore, characterization of the signaling pathways that stimulate ERK1/2 phosphorylation through a particular receptor is essential to understand its role in physiology and pathology. The ability of the Bom-AKHR to activate the phosphorylation of ERK1/2 in HEK293 cells and the determination of the G proteins' responsibilities for coupling the AKHR to MAPK activation are examined in Fig. 3A. As shown in Fig. 3B and C, AKH induced a time- and concentration-dependent increase in MAPK activity. AKH-stimulated MAPK activity was maximal at 5 min of stimulation and the activity persisted for about 15 min. ERK1/2 phosphorylation have been reported to be involved in the regulation of lipid metabolism including regulation of contraction-induced activation of muscle hormone sensitive lipase (HSL) [25] and regulation of contraction-induced acetyl-CoA carboxylase phosphorylation and subsequent long-chain FA oxidation in mammalian cells [26,27]. Further investigations will be required to define the role of ERK1/2 in the transduction of the hyperlipaemic signal in insects.

The green fluorescent protein (GFP) has been widely used to study the localization, distribution, and function of other proteins

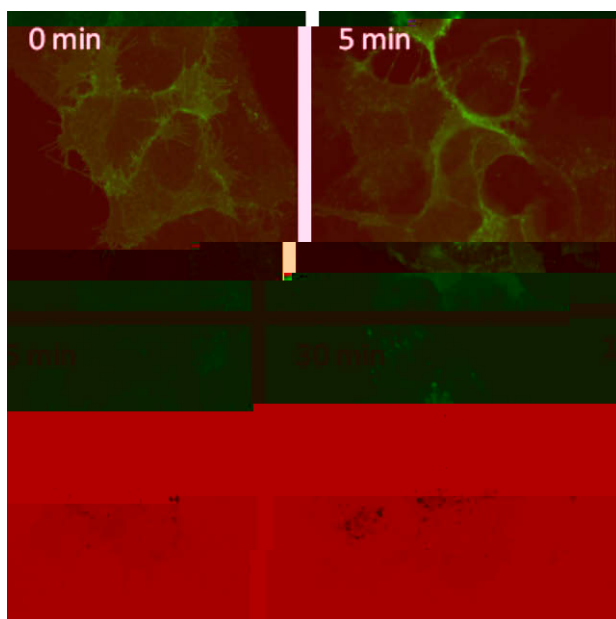


**Fig. 3.** Activation of ERK1/2 by AKH1. (A) AKH1 induce pERK1/2 only in transfected cells, not in controls of the experiment. (B) Time course of AKH-stimulated phosphorylation of ERK1/2 in stable AKHR-expressing HEK293 cells, cells were incubated with 10  $\mu$ M AKH1 for the indicated times. (C) Concentration-dependent activation of ERK1/2 phosphorylation by AKH1 in HEK293 cells stably expressing Flag-AKHR. Cellular lysates were immunoblotted with phospho-specific (top lane) and non-specific (bottom lane) anti-ERK1/2 antibody, as described in Section 2. The results are representative of at least three independent experiments.

by fusion expression in different systems. In this study, an expression vector of *Bombyx* AKHR fused with EGFP at its C-terminus was constructed and expressed stably in HEK293 cells for easy visuali-

zation of receptor localization, internalization and trafficking. Compared to the wild-type AKHR, AKHR-EGFP was found to be expressed and function normally. We showed for the first time that, upon binding and activation by AKH peptide, AKHR was rapidly internalized in a dose- and time-dependent manner. Further investigation of receptor trafficking and recycling is under way in our lab.

In *Bombyx*, a non-peptide AKH1 has been first identified [10], and quite recently Roller et al. identified another two distinct cDNAs encoding the prepro-*Bombyx* AKH2, and 3. *Bombyx* AKH1 is identical to non-peptides found only in moths, while *Bombyx* AKH2 is closely related to many other AKH/HrTH decapeptides. Although previous studies indicated that the *Heliothis zea* hypertrehalosaemic hormone (Hez-HrTH) activated *Bombyx* AKHR with a higher affinity than that of AKH1 [12], in our research, we demonstrated that AKH2 exhibit comparable activities in intracellular cAMP accumulation to AKH1, but much lower activities in phosphorylation of ERK1/2 and receptor internalization than that of AKH1. In structure, *Bombyx* AKH2 is closely related to Hez-HrTH, but with three amino acids different, these three amino acids may be responsible for the differences of activation on *Bombyx* AKHR between *Bombyx* AKH2 and Hez-HrTH. *Bombyx* AKH3 is more closely related to non-lepidopteran AKH peptides, and was much less effective in activating *Bombyx* AKHR we tested in this study, strongly implying that it is more likely that a second intrinsic AKHR exists as a high affinity receptor for AKH3 in *Bombyx*. The identification of AKHR-mediated signaling pathways is of importance to obtain a better understanding of the role of AKH/AKHR in the regulation of the molecular events responsible for sugar homeostasis and energy mobilization.



**Fig. 4.** Time course of AKHR-EGFP internalization induced by AKH1. Cells were incubated with 10 nM AKH at 37  $^{\circ}$ C for the indicated times, and after washing fixing, were examined by fluorescence microscopy as described in Section 2. The results are representative of three independent experiments.

- [2] Schaffer, M.H., Noyes, B.E., Slaughter, C.A., Thorne, G.C. and Gaskell, S.J. (1990) The fruitfly *Drosophila melanogaster* contains a novel charged adipokinetic-hormone-family peptide. *Biochem. J.* 269, 315–320.
- [3] Gade, G. (1991) A unique charged tyrosine-containing member of the adipokinetic hormone/red-pigment-concentrating hormone peptide family isolated and sequenced from two beetle species. *Biochem. J.* 275 (Pt. 3), 671–677.
- [4] Oudejans, R.C., Kooiman, F.P., Heerma, W., Versluis, C., Slotboom, A.J. and Beenackers, M.T. (1991) Isolation and structure elucidation of a novel adipokinetic hormone (Lom-AKH-III) from the glandular lobes of the corpus cardiacum of the migratory locust, *Locusta migratoria*. *Eur. J. Biochem.* 195, 351–359.
- [5] Gade, G., Janssens, M.P. and Kellner, R. (1994) A novel peptide in the AKH/RPCH family isolated from the corpora cardiaca of the Emperor dragonfly, *Anax imperator*. *Peptides* 15, 1–6.

## Acknowledgements

We thank Dr. Kerong He for providing silkworm larvae and pupae, thank Ms. Yanyan Gu for cloning of AKHR cDNA and the investigators mentioned in Section 2 for their generous gifts or reagents. We thank Dr. Ji-Ming Wang for critical reading of the manuscript. This work was supported in part by grants from the National Natural Science Foundation of China (30670425).

## References

- [1] Schooneveld, H., Tesser, G.I., Veenstra, J.A. and Romberg-Privee, H.M. (1983) Adipokinetic hormone and AKH-like peptide demonstrated in the corpora cardiaca and nervous system of *Locusta migratoria* by immunocytochemistry. *Cell Tissue Res.* 230, 67–76.